

There's no better time to **invest** in **your backyard**. Make your family **happy**. Start making **memories**.



125,000+
POOLS SOLD



55+ YEARS
EXPERT EXPERIENCE



210,000+
HAPPY FAMILIES

HOW DO WE DO IT?

At Namco, we prioritize our **customers** and our community. We offer a wide selection of pools, patio furniture & hot tubs, ensuring that we have something for everyone. With over **55 YEARS** of expert experience, we bring excitement and comfort to your **BACKYARD OASIS**.

WHY NAMCO?

LOWEST prices nation-wide with new financing plans available.

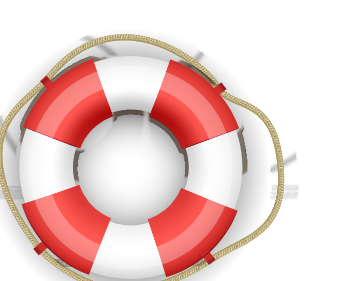
LARGEST selection of pools, patio, hot tubs, and recreational products.

IMMEDIATE availability and priority delivery across all product lines.



FREE DELIVERY AVAILABLE
CONTACT YOUR **LOCAL STORE**
***RESTRICTIONS APPLY**

START **MAKING MEMORIES**.



Economy pools, **budget-friendly** with **high-grade** materials.

PROLINE
Pool Products

BERMUDA

- **Unique design** & top-of-the-line engineering
- 6" **galvanized steel** frame
- 48" **steel** wall with steel bottom track
- Comes with **plain blue liner**
- **10-year prorated warranty**

12' 15' 18' 21' 27'

PLAIN BLUE
LINER

HAVANA

- Threaded and sealed for **superior durability**
- 7" **galvanized steel** frame
- 52" steel wall with steel bottom track
- Comes with **Boulder swirl liner**
- **10-year prorated warranty**

15' 18' 21' 24' 27' 15'x30' 18'x33'

BOULDER SWIRL
LINER

ATLANTIS

- **Luxurious** design, charcoal-colored frame
- Extreme **rust-resistant** materials
- 6" full **resin** frame
- 52" **galvanized steel** wall with steel bottom track
- Comes with **Boulder liner**
- **20-year prorated warranty**

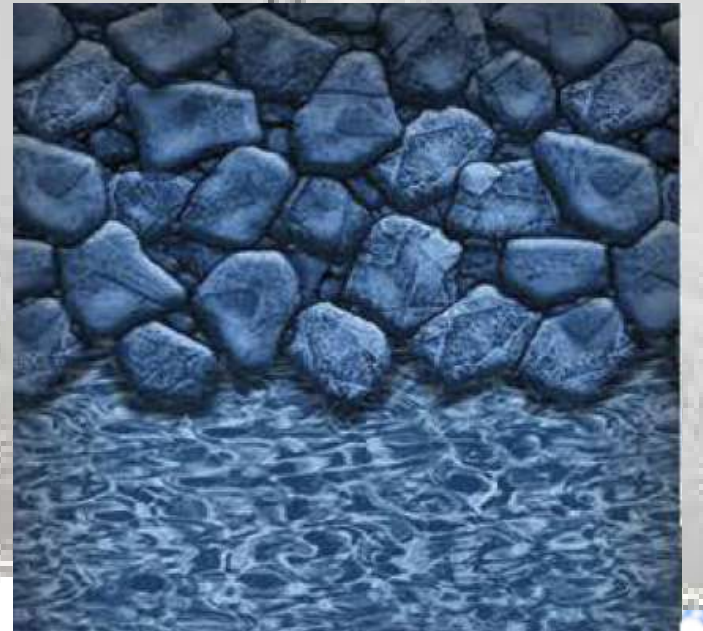
15' 18' 21' 24' 27' 15'x30' 18'x33'

BOULDER
LINER



NAMCOPOOL.COM

AFFORDABLE FINANCING OPTIONS TO MAKE YOUR **BACKYARD STAYCATION** COME TRUE!



BOULDER SWIRL LINER

MORADA

- Elegance and **durability** over the years!
- Extreme **rust-resistant** materials
- 8" **galvanized steel** frame with **resin** top rails
- 52" **steel** wall with **steel** bottom track
- Comes with **Boulder swirl liner**
- 3 years full, **20 years prorated warranty**

ROUND 12' 15' 18' 21' 24' 27' 30'

OVAL 12'x24' 15'x26' 15'x30' 18'x33'



MUSKOKA LINER

MANHATTAN

- Modern design with **high-grade** materials
- **Salt** compatible
- 6" full **resin** frame
- 52" **steel** wall with **resin** bottom track
- Comes with **Muskoka liner**
- 2 years full, **20 years prorated warranty**

ROUND 12' 15' 18' 21' 24' 27'

OVAL 15'x26' 15'x30'

LOWEST PRICE

LARGEST SELECTION

PRIORITY SHIPPING

QUEST

- Delivers **maximum strength** and durability over the years!
- **Salt** compatible
- 9" **hybrid** frame
- **Resin** top rail, **resin** bottom track and **steel** vertical posts
- 54" **aluminum** wall
- Comes with **Riverstone Liner**
- 5 years full **prorated lifetime warranty**



ROUND

12'

15'

18'

21'

24'

27'

30'

OVAL

12'x17'

15'x26'

15'x30'

18'x33'



RIVERSTONE
LINER



RESIN JOINT
PLATES



QUEST
ALUMINUM WALL



RESIN
TOP CAP



ECO-FRIENDLY

5 YEARS FULL PRORATED LIFETIME WARRANTY

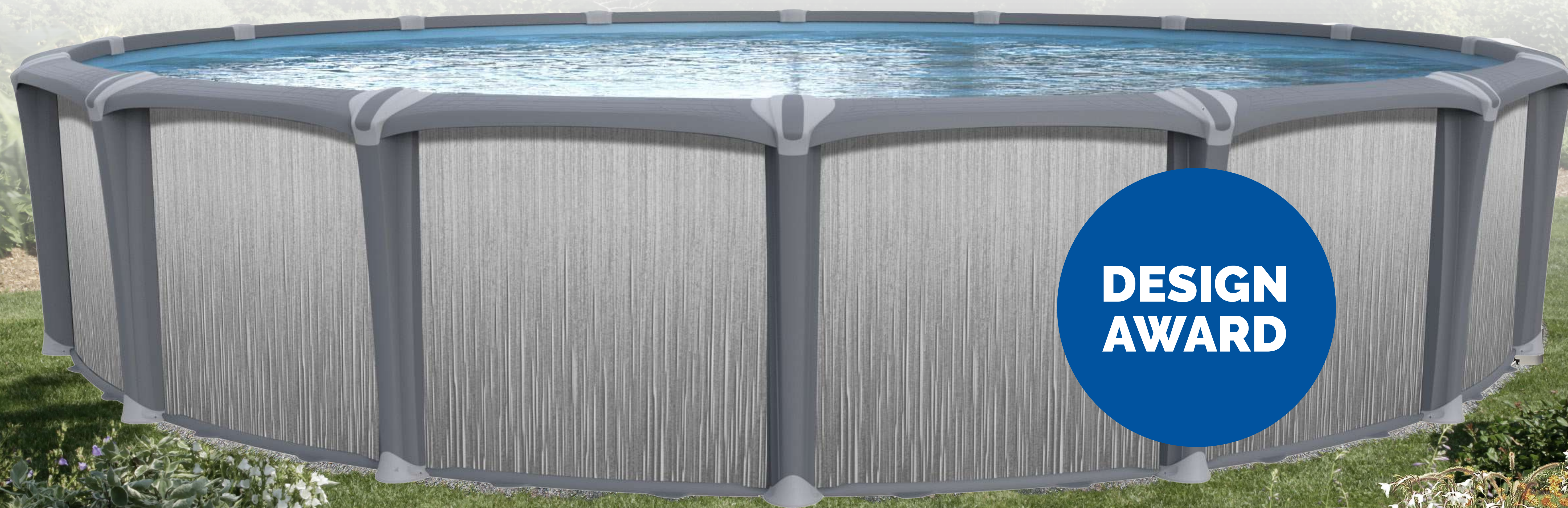
SYNERGY

- Low-maintenance enjoyment. Built to last **many years!**
- **Salt** compatible
- 9" full **resin** frame
- 54" **aluminum** wall with **resin** bottom track
- Comes with **Outlook Liner**
- 5 years full **prorated lifetime warranty**

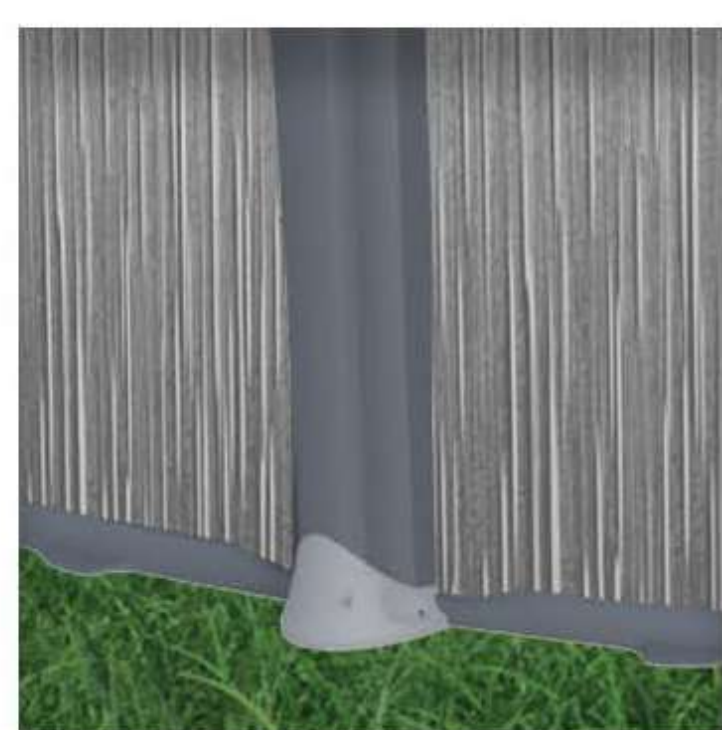


ROUND 12' 15' 18' 21' 24' 27' 30'

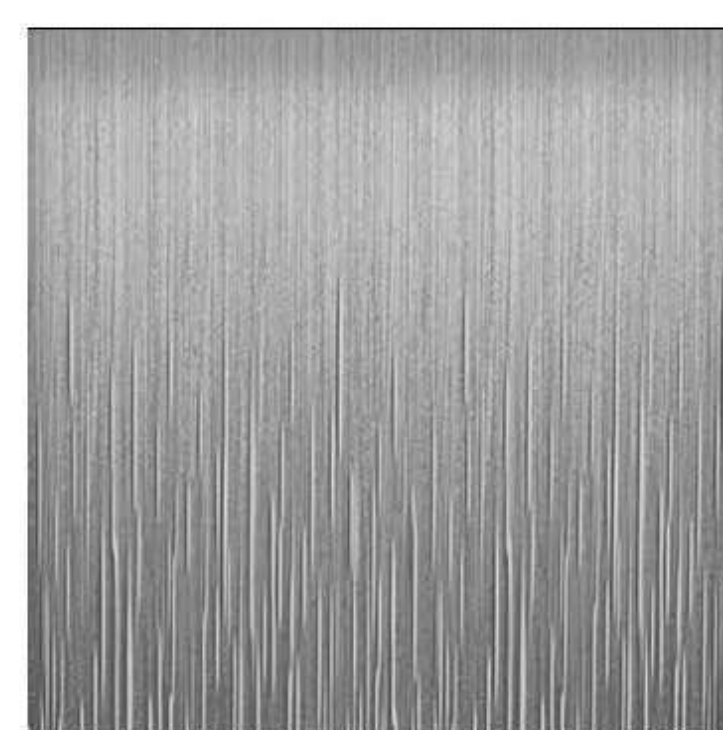
OVAL 15'x26' 15'x30' 18'x33'



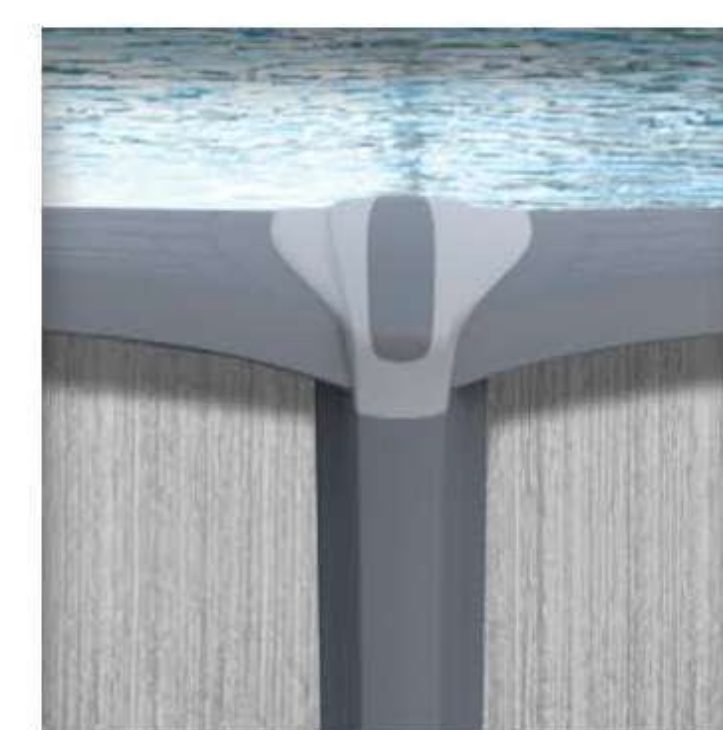
**OUTLOOK
LINER**



**RESIN JOINT
PLATES**



**SYNERGY
ALUMINUM WALL**



**RESIN
TOP CAP**



ECO-FRIENDLY

5 YEARS FULL PRORATED LIFETIME WARRANTY

COLORADO

- Low-maintenance enjoyment. Built to last **many years!**
- 7" full **resin** frame
- 52" **steel** wall with **resin** bottom track
- Comes with **Riverstone Liner**
- 3 years full **prorated lifetime warranty**

ROUND

15'

18'

21'

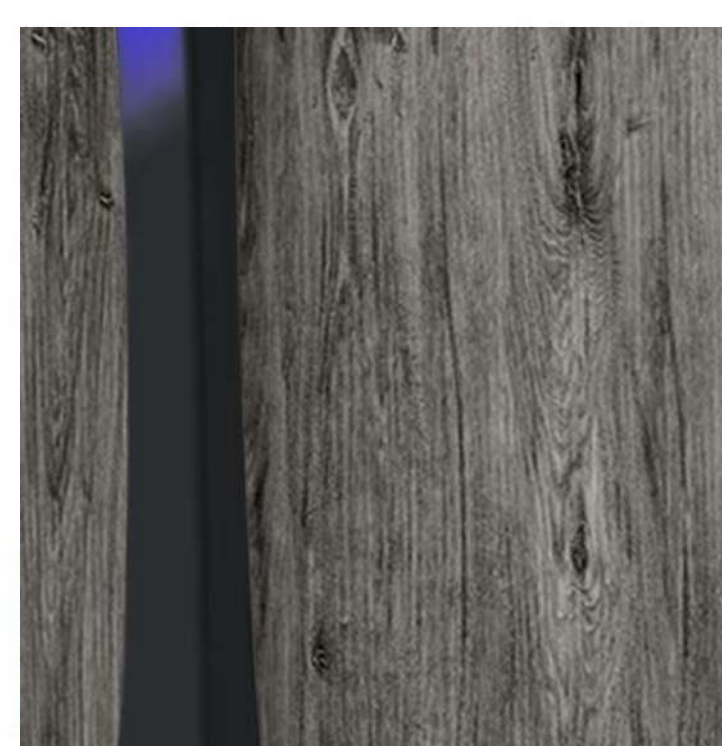
24'



**ONLY AT
NAMCO**



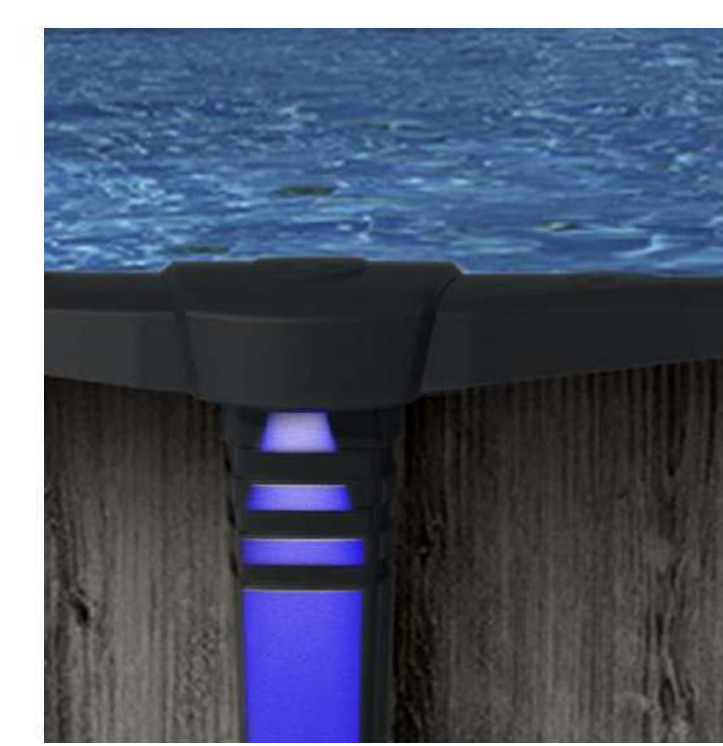
**RIVERSTONE
LINER**



**RESIN JOINT
PLATES**



**STEEL WALL
WITH RESIN**



**RESIN
TOP CAP**



ECO-FRIENDLY

5 YEARS FULL PRORATED LIFETIME WARRANTY

THE NAMCO PROVEN PROCESS

THE **MOST TRUSTED** IN YOUR COMMUNITY



POOL SELECTION

STEP 1

- Customer questionnaire
- **NEW!** Budget and financing plans
- Select perfect fit for your family
- Fulfill all customer needs



PRIORITY DELIVERY

STEP 2

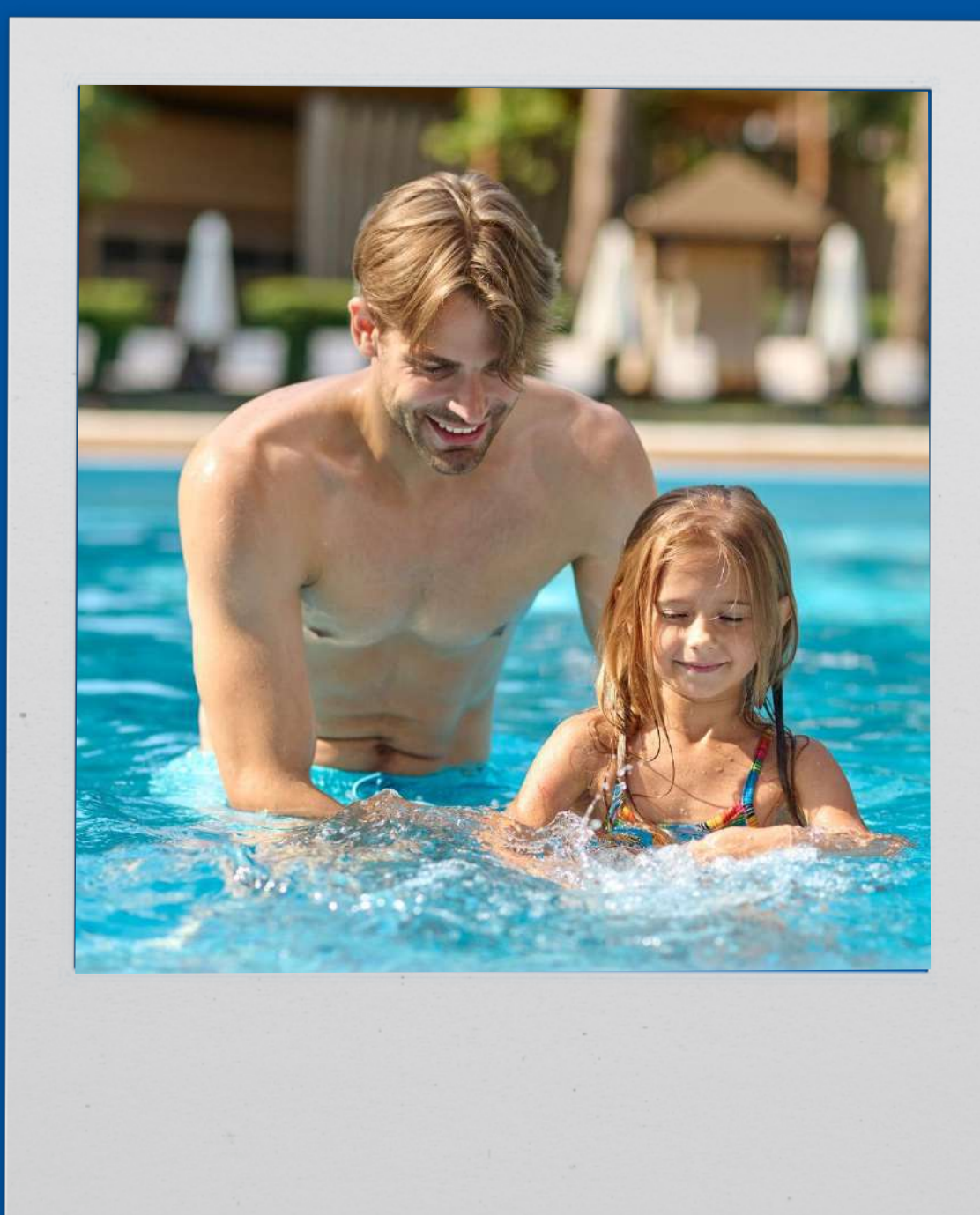
- 7-14 day delivery on pools, patio, and hot tubs
- Immediate availability on all other products
- **NEW!** No contact delivery
- Installation support available



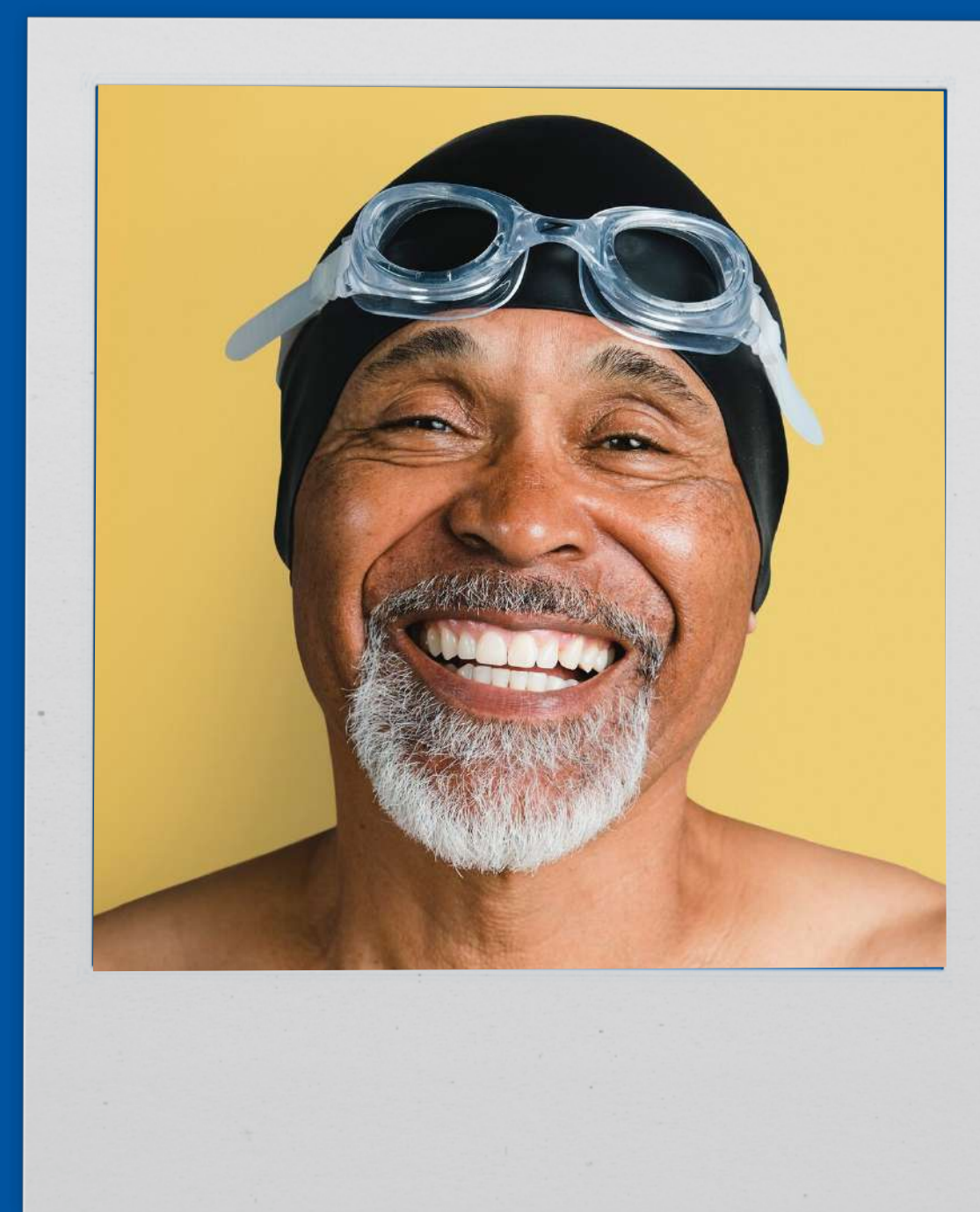
EXPERTS FOR LIFE

STEP 3

- Expert advice & product support
- **NEW!** Warranty protection
- Chemical & maintenance
- Patio furniture & hot tubs



Namco was a great choice; we have purchased two pools from them. Their team was a **big help** choosing what we needed to meet our needs. I would **highly recommend** anyone purchasing a new pool and package to shop here!



I purchased a pool package from Namco and had a wonderful experience. The salesperson was polite, informative, and helpful. I have been using Namco products for over 30 years and this is why I keep coming back!

NAMCO POOL PROTECTION PLAN (PPP)

THE NAMCO POOL PROTECTION PLAN PROVIDES

100% FULL COVERAGE

ON ALL PARTS AND LABOR FOR YOUR

NAMCO-BOUGHT-AND-INSTALLED SWIMMING POOL

Namco pools already come with a standard limited manufacturer's warranty that is only prorated and limited to coverage on individual parts.

SIT BACK AND RELAX: GET THE EXTRA PROTECTION

PLAN BENEFITS

- 100% coverage on parts and labor
- No deductibles
- No hidden charges
- 2-3 years starting from installation date
- No limit to the number of repairs
- Pumps and filtration systems
- Seam separation of pool liner
- Breaking, bending, or warping pool frame due to manufacturing defect
- Protection Plan does not cover an act of God
- Protection Plan does not cover winter damage

POOL PROTECTION PLAN		
	2-Year/\$199	3-Year/\$299
ITEM	WITHOUT PPP	WITH PPP
Liner Repair	\$350	✓
Liner Cost	\$450	✓
Filter Cost	\$425	✓
Filter Repair	\$125/hour	✓
Motor Repair	\$125/hour	✓
Motor Cost	\$230	✓
Pool Structure	\$150/hour	✓

NAMCO BENEFITS

- Free water testing at all locations
- Installation support
- Lowest prices in the nation
- Largest selection in the region
- Immediate product availability!
- **NEW!** Financing options
- Salt compatible pools
- Affordable patio sets + accessories
- Top-quality chemical selection
- Proline pool products
- Best protection in the industry

